

Element 37.00

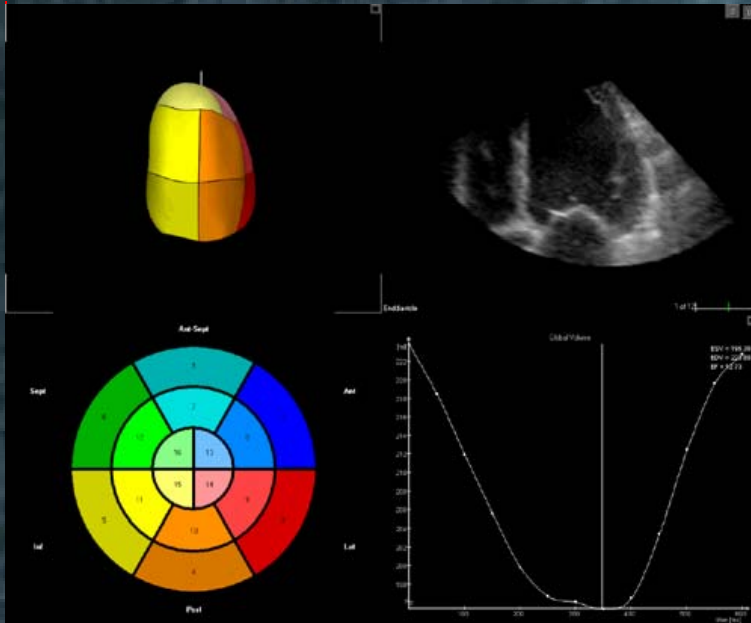
Patient 2



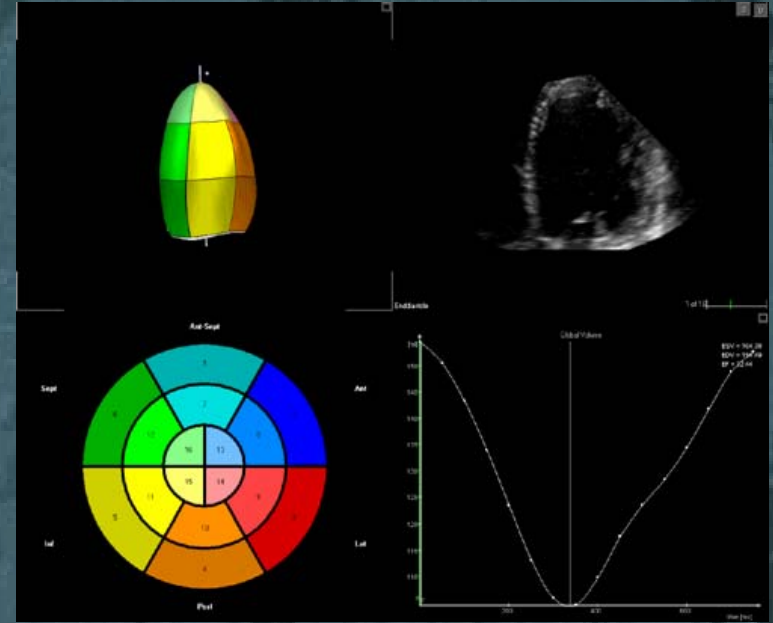
Case Study

- **58 y.o. male merchant seaman**
- **Class IV heart failure**
- **Bi-V pacer placed 7 mos ago**
- **Now doing well**
- **For optimization check**

Real-Time 3D Echo

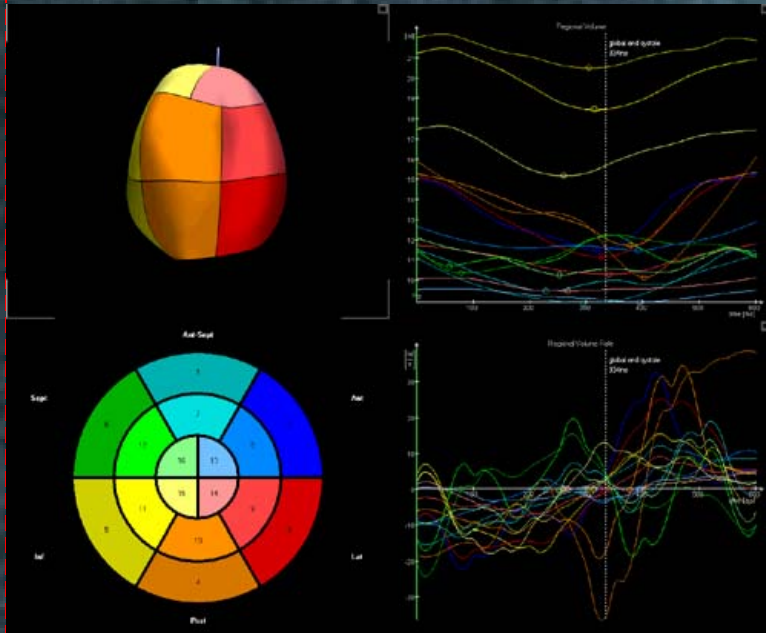


Pre CRT
LVEF 18%
EDV 151 ml

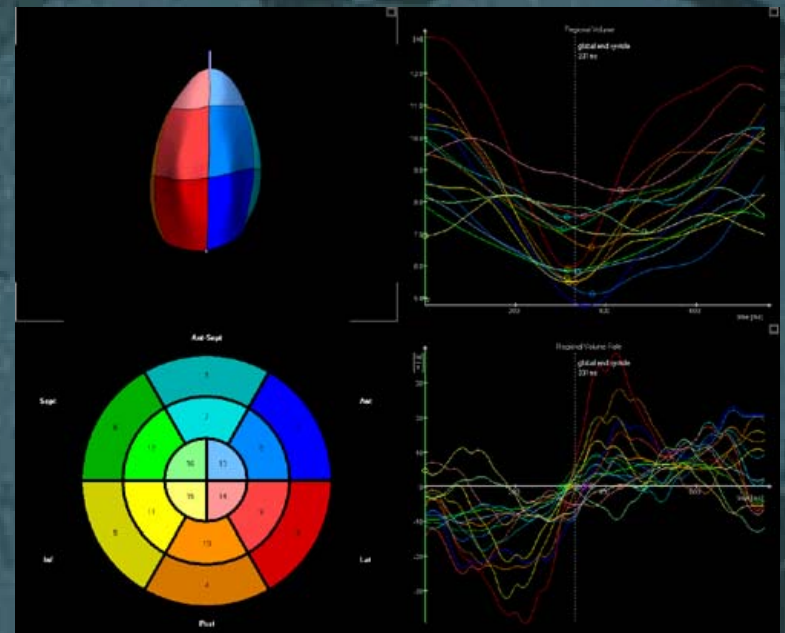


10 months post CRT
LVEF 38%
EDV 198 ml

RT3DE - Regional Volumes

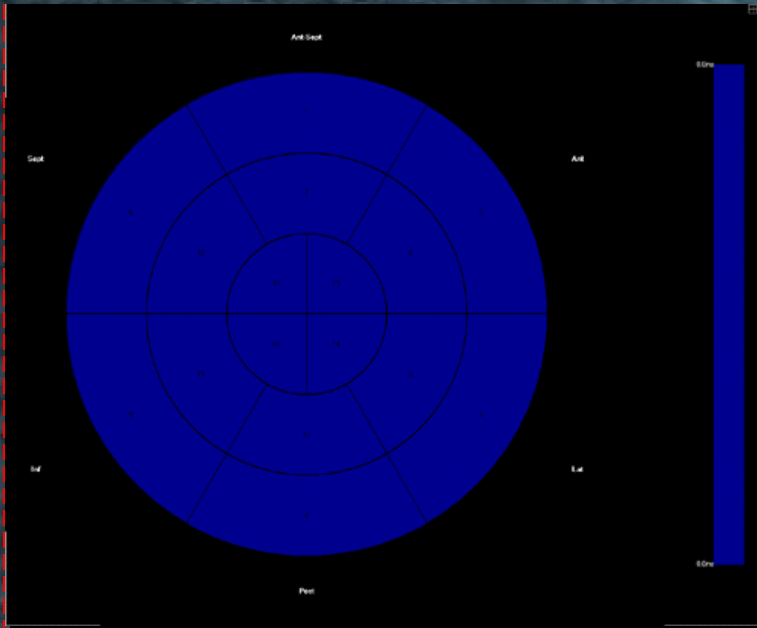


**Pre CRT
SDI 15.8%**

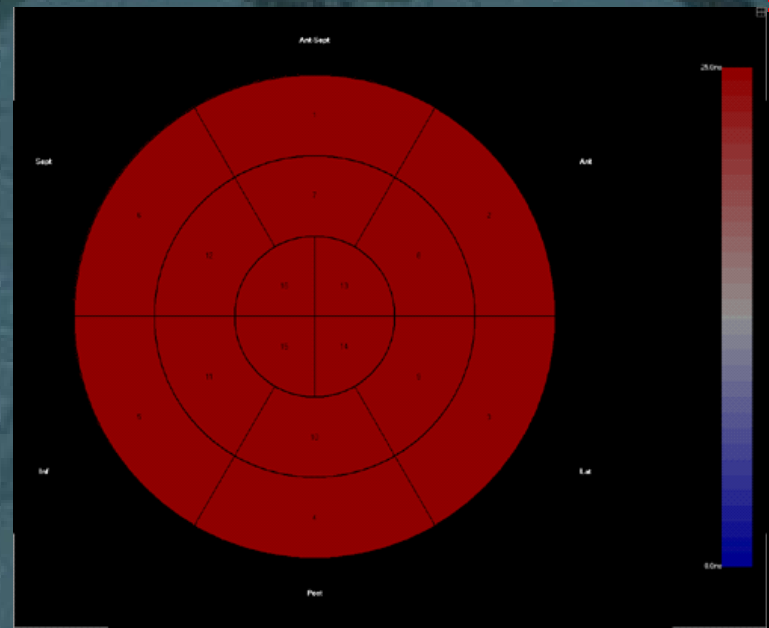


**10 months post CRT
SDI 10.1%**

Contraction Front Mapping

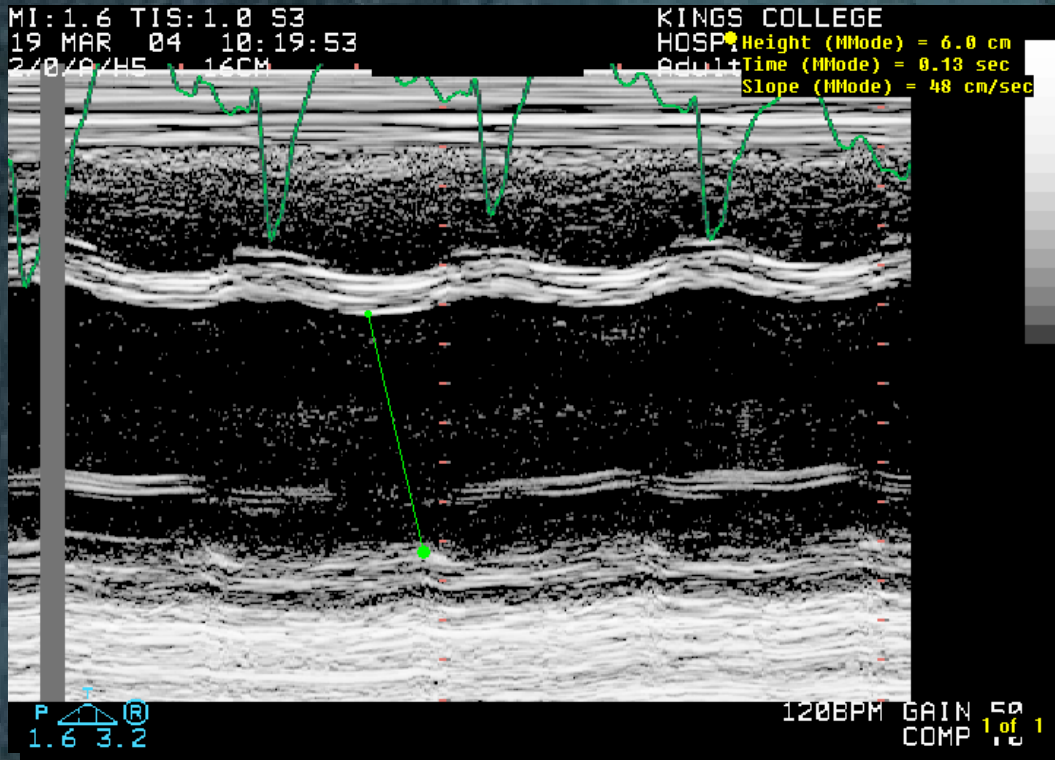


Pre CRT



10 months post CRT

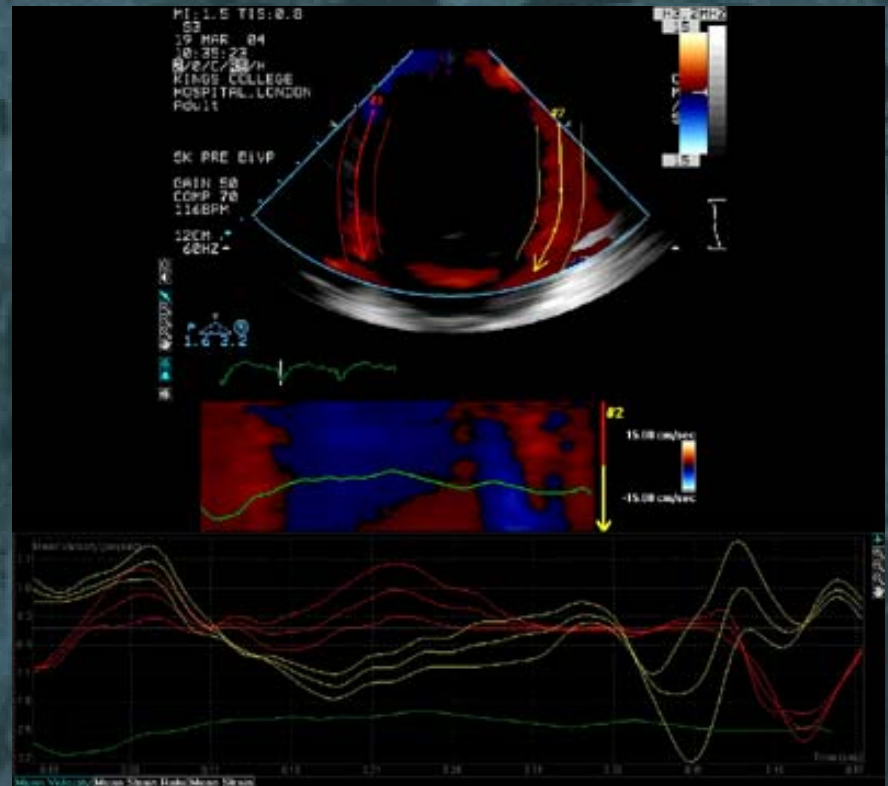
SPWMD



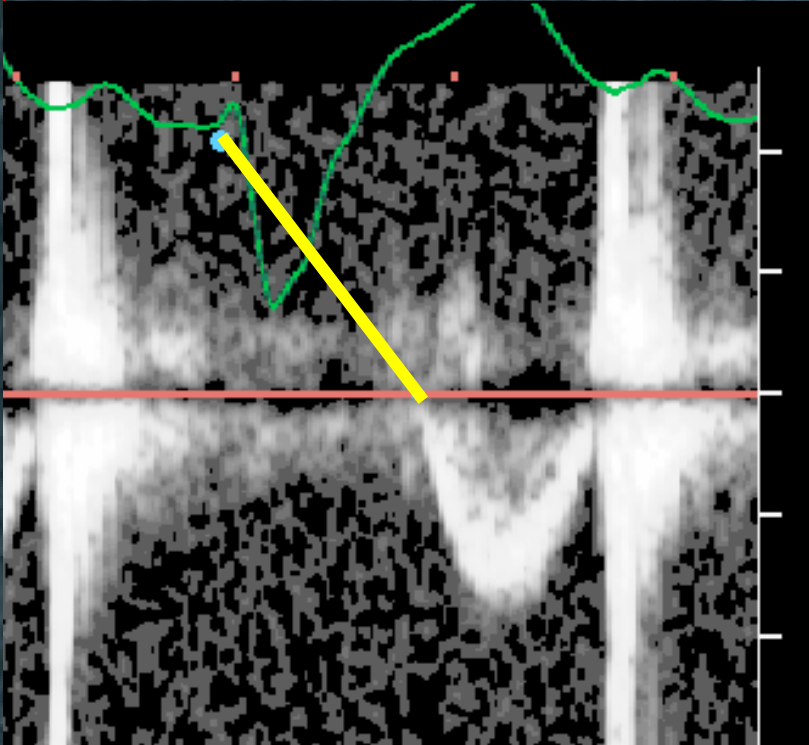
SPWMD 130 ms
≥ 130 cut-off for CRT (*Pitzalis, et al, JACC 2003*)

TDI

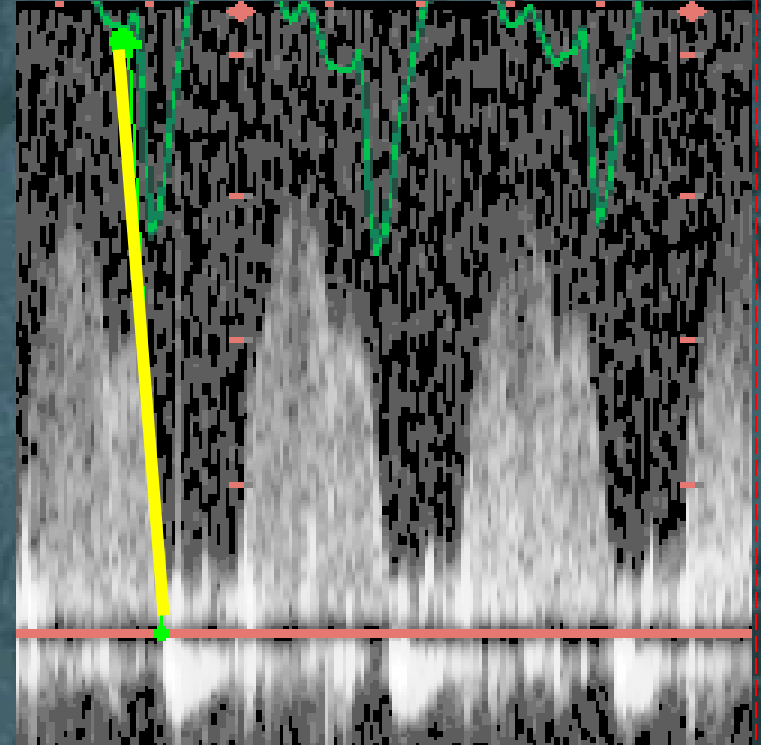
- TD-SD: 105 ms
- TS-SD: ST-DEV of times to peak syst vel in 12 non-apical segs
- TS-SD predictor for response to CRT
- TS-SD ≥ 33 ms best cut off
- Post CRT: 44 ms



Inter-ventricular Delay



LVOT: 180 ms



RVOT: 90 ms

Delay ≥ 40 ms is consistent with significant inter-ventricular dyssynchrony

