

Element 59.0

Adams/Strub

Doppler and Failure

- Orientation
- Settings
- Serial studies

Patient 2

- 45 y.o. male
- Hypertrophic CM
- Alcohol ablation
- Follow-up

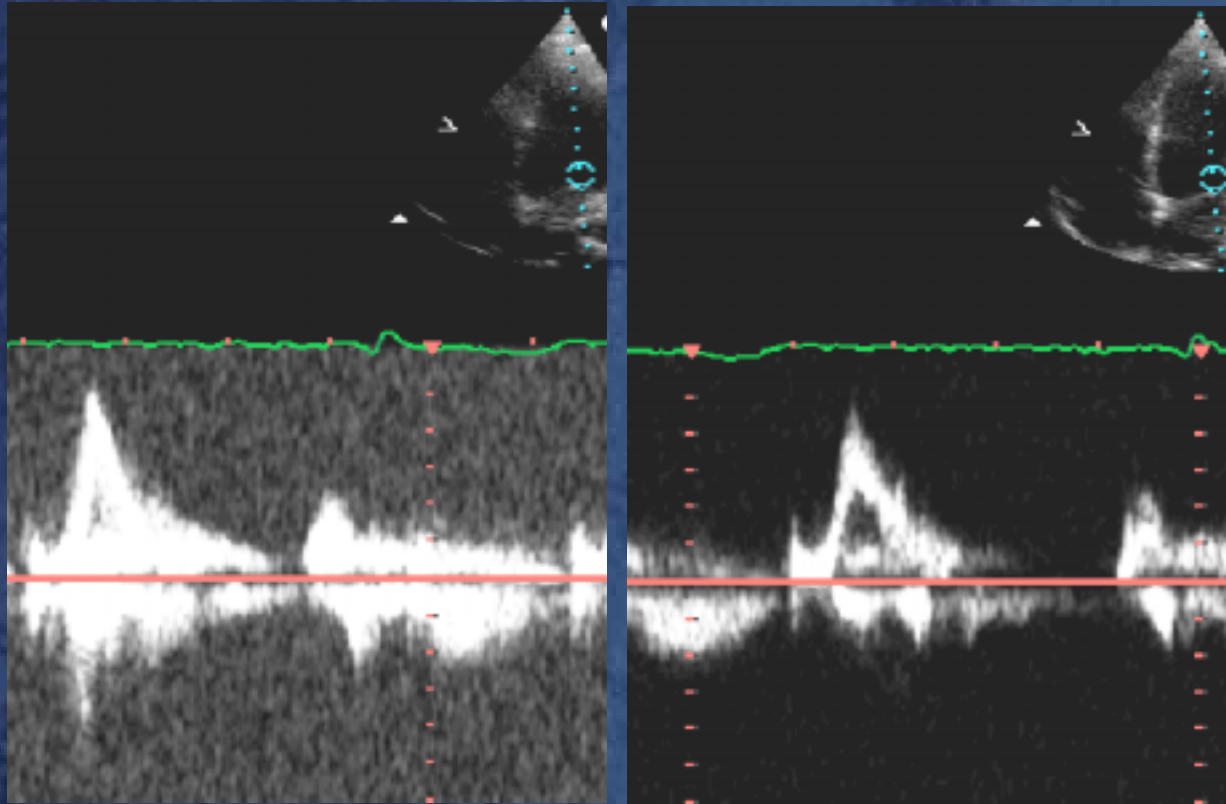
Technical Tips

Doppler

- Parallel to flow
- Don't over / under gain
- Pulmonary veins
always required
use larger gate
suspend respirations

Doppler Settings

Effect of gain



Excess gain

Correct

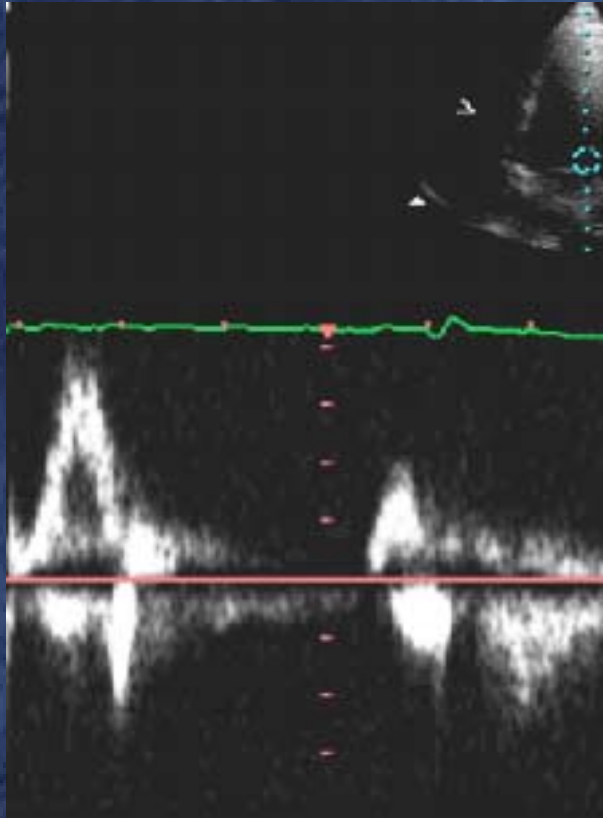
Technical Tips

Doppler

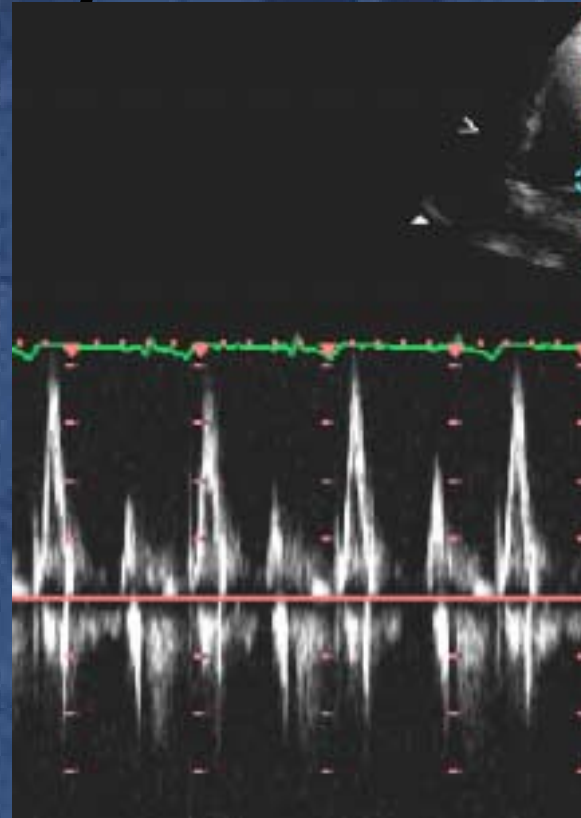
- Adjust scale
- Sweep speed
- Compress
- Filter/reject

Doppler Settings

Effect of speed



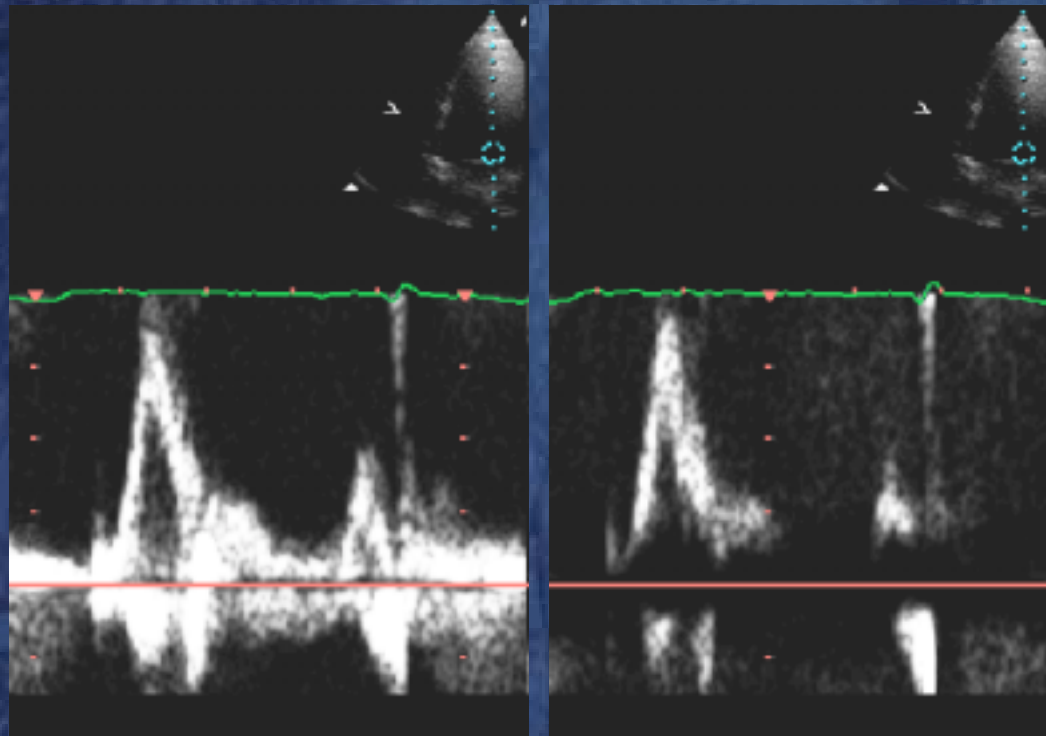
Correct



Too slow

Doppler Settings

Effect of baseline filter



Proper

Too high