

**Adams/Strub**

**element**

**23.00**

# Case Study

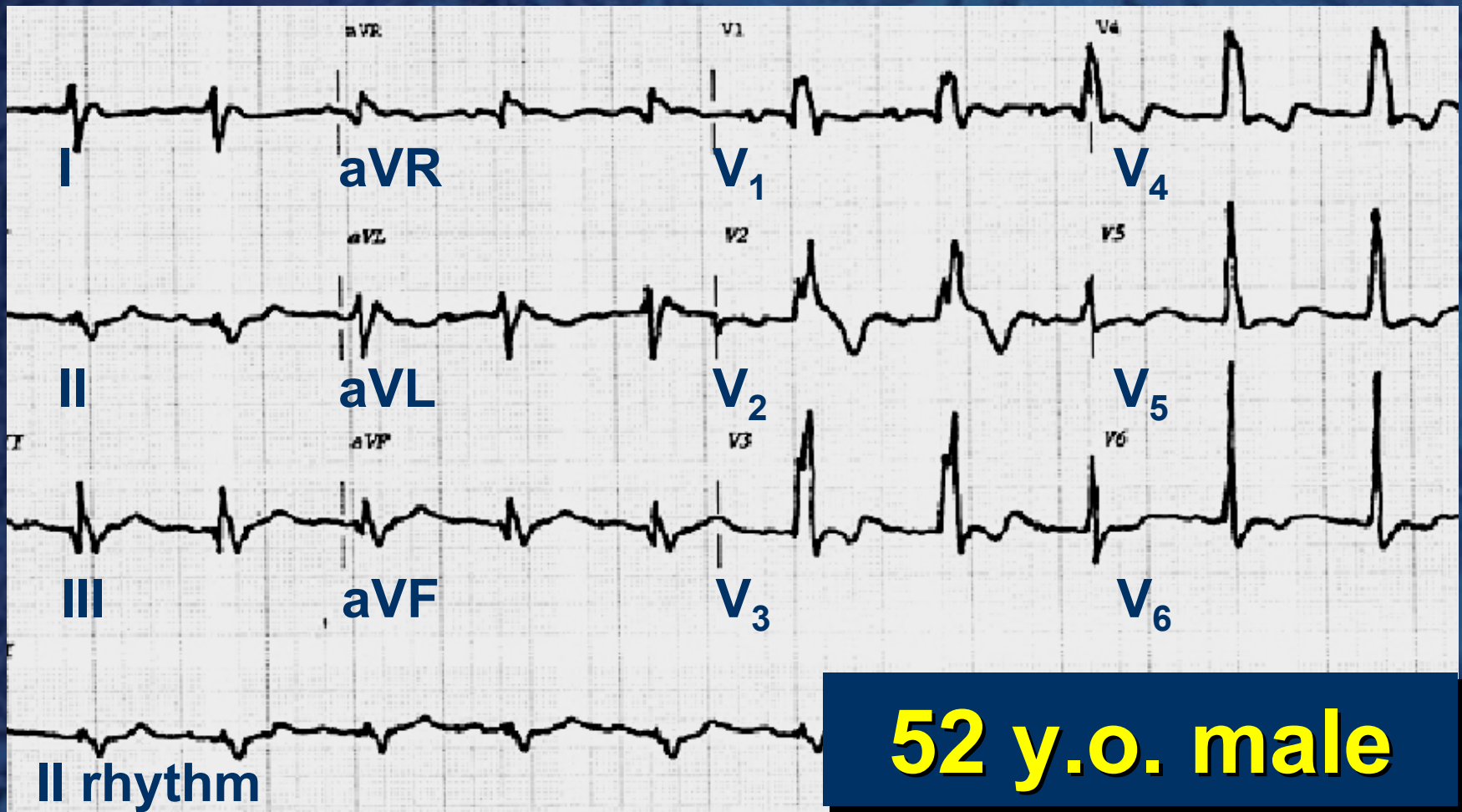
- 52 y/o male
- Blalock Taussig 1957
- TET repair 1963
- New onset angina



**ECHO** *in*Context



**ECHO***inContext*



**52 y.o. male**

# Tips for Endocardium

- Patient position (left lateral)
- High frequency
- Adjust focus
- Adjust gain/grayscale/harmonics
- Suspend respiration

# Tips for Stress

- Not for beginners
- Use harmonics (low frequency)
- Use contrast when necessary

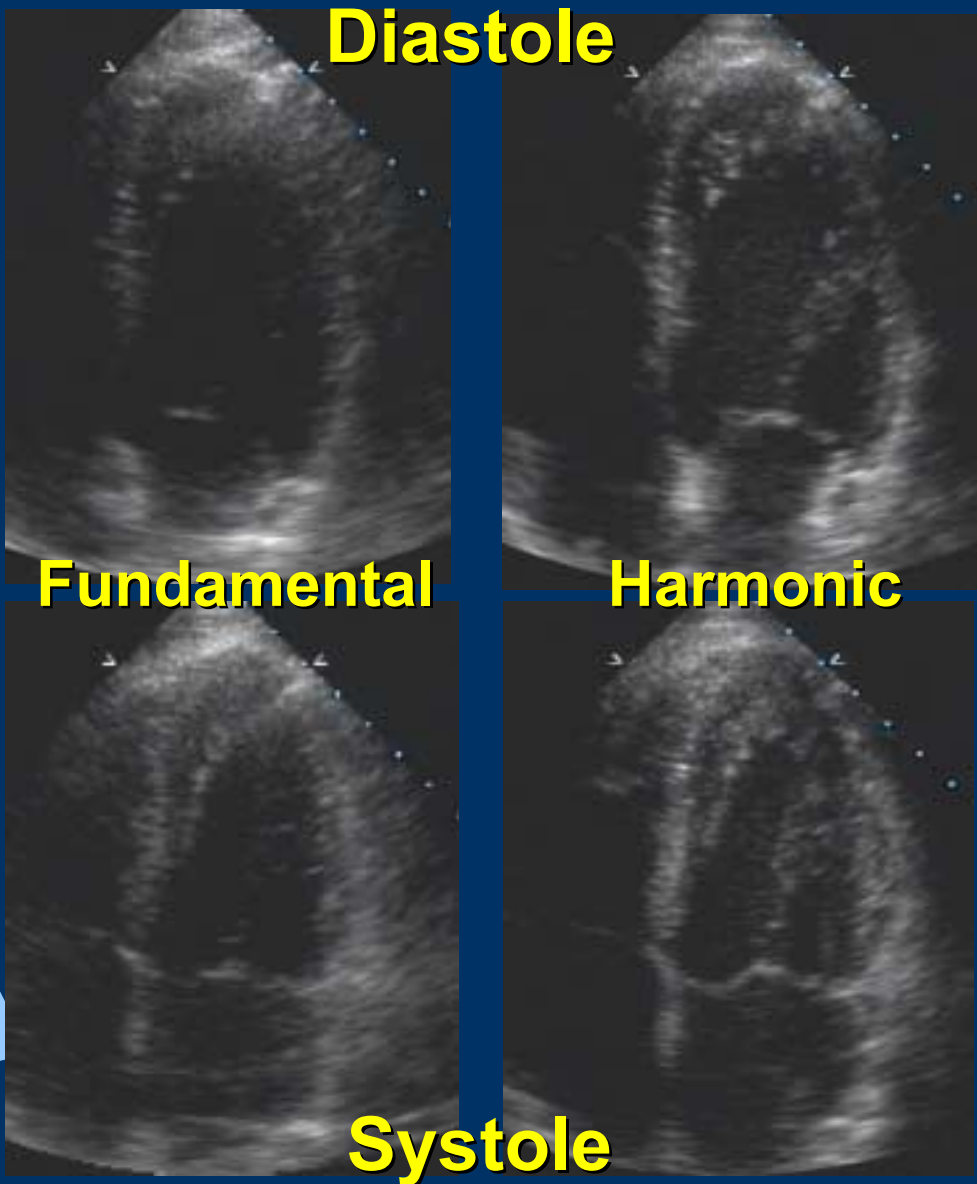
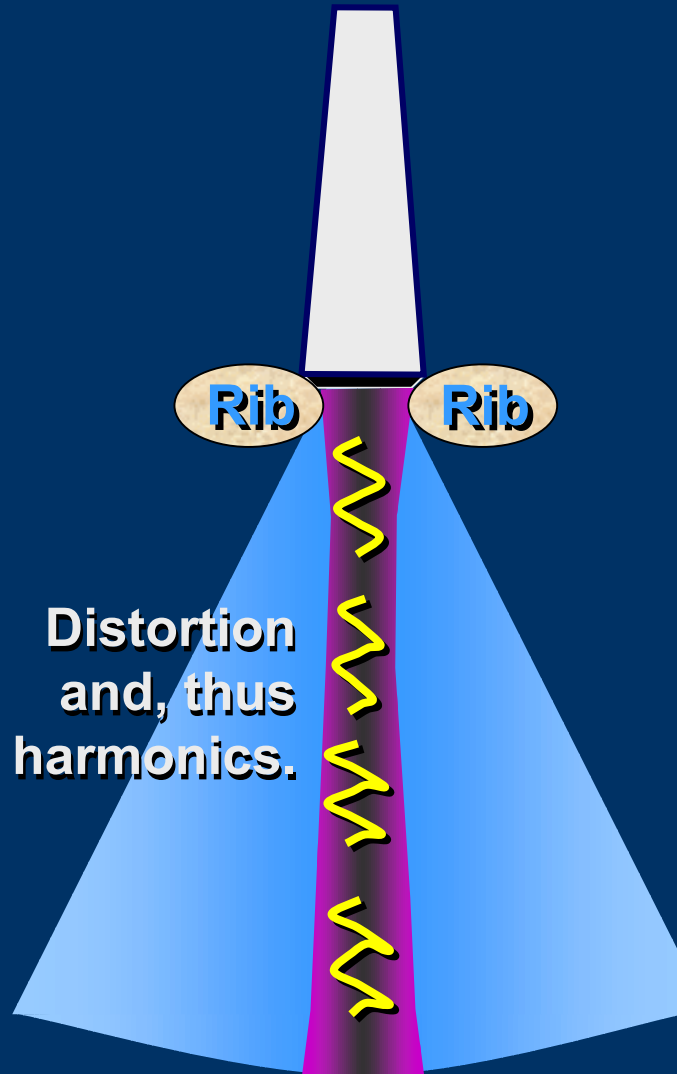
*Decide at baseline*

- Don't foreshorten apex
- Don't make SAX views too basal
- Choose your landmarks

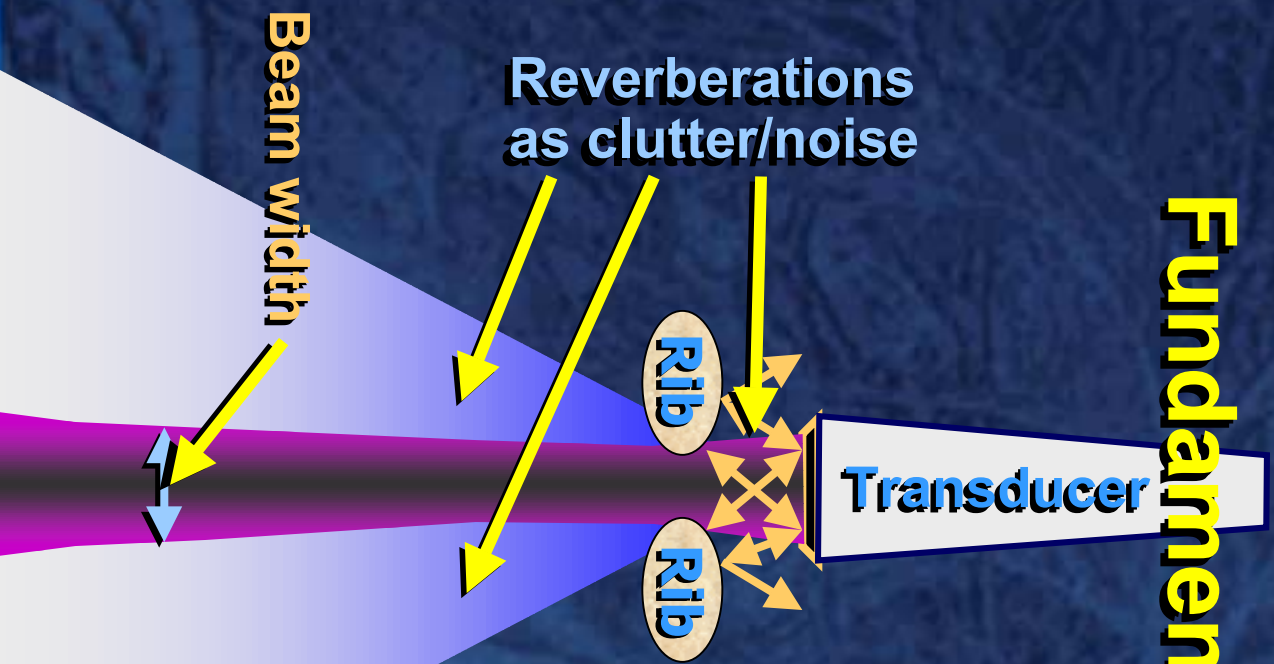
*Use the "compare" feature*

# Harmonic Warnings

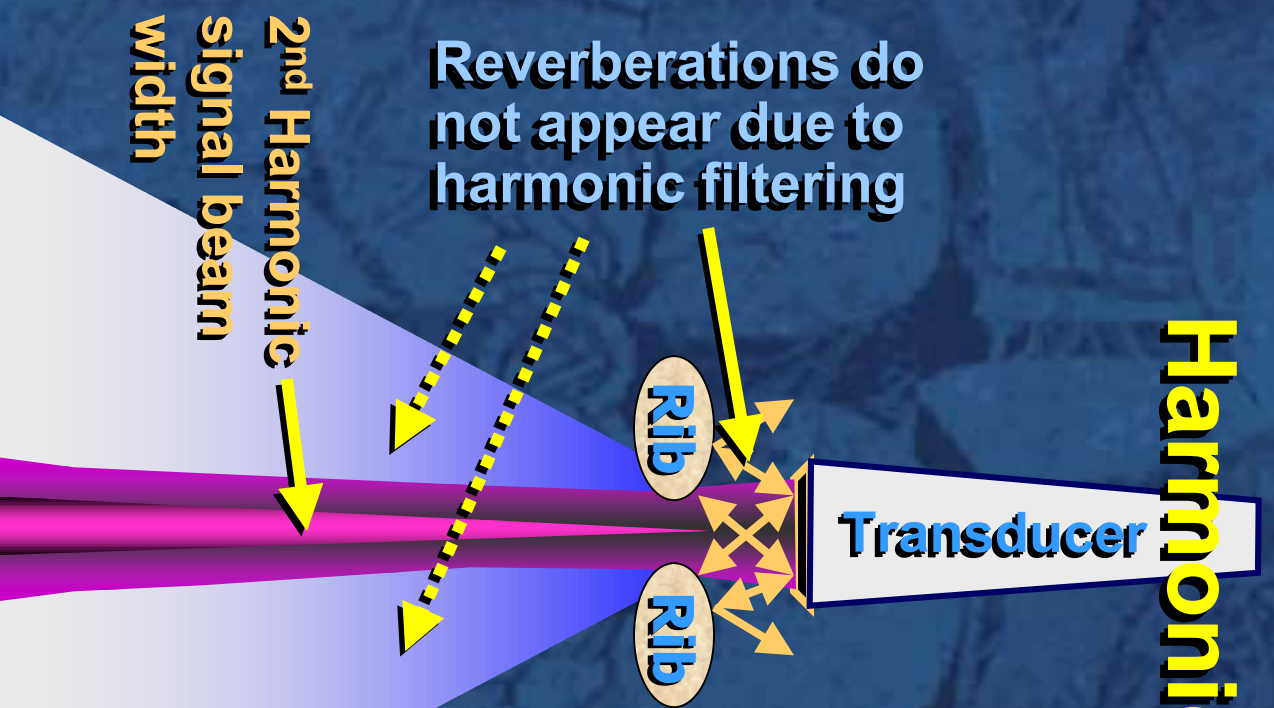
- Everything appears thicker
- Less gray scale
- Don't use only harmonics



# Fundamental



# Harmonic



# ECHO in Context

# **Musculoskeletal Injury**

- **Major problem world wide**
- **Repetitive motion**
- **More info at website**

*check workbook website*